

# SPACE OPTIONS FOR YOUR EVENT



This dossier provides an overview of venues with detailed information to explore the options quickly and easily, helping you choose the perfect venue for your event.

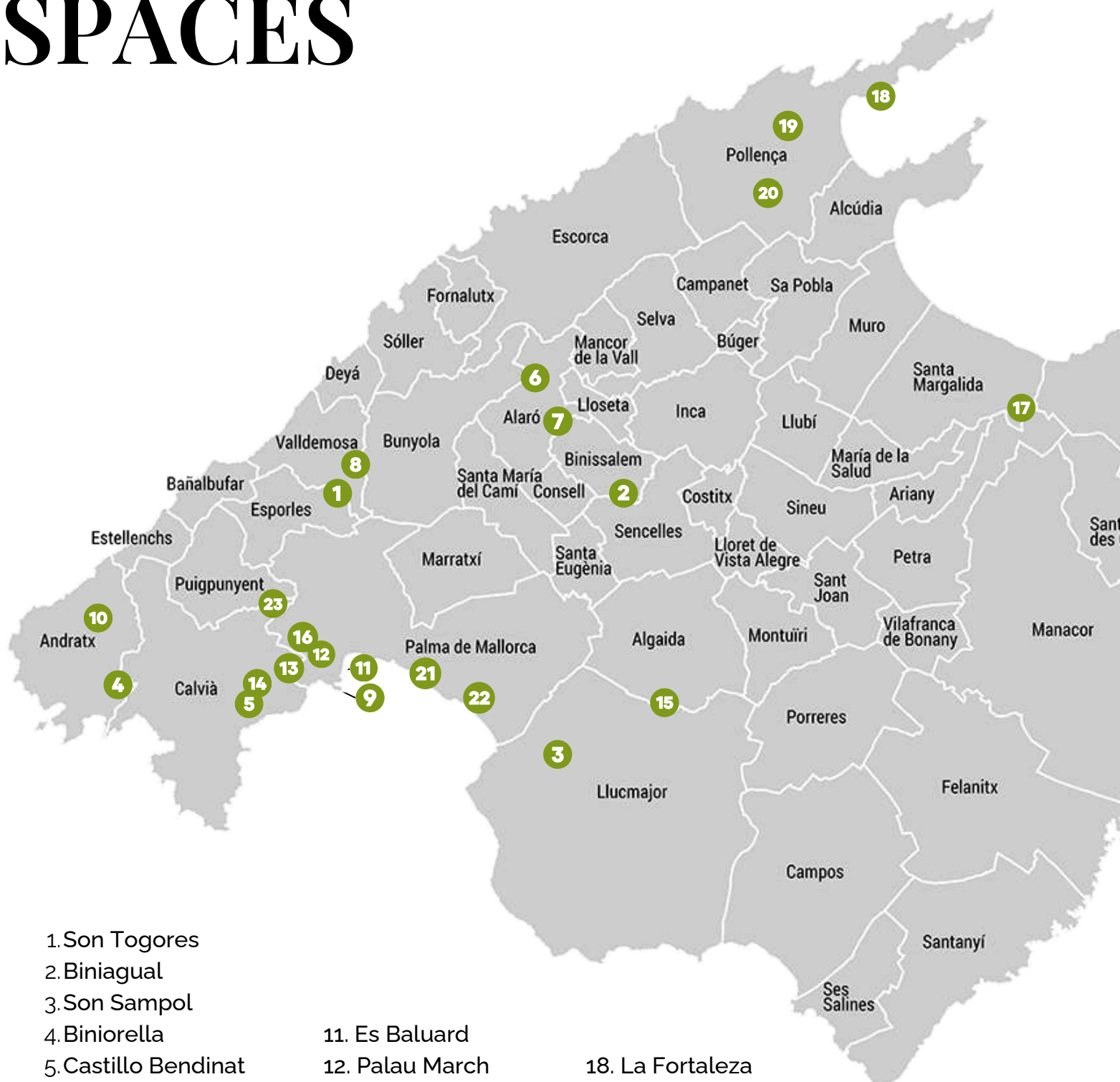
**FOSH**  
*catering*

  
**Tast Out**  
EVENTS & CATERING

# LOCATIONS SPACES

**FOSH**  
IBIZA MALLORCA  
*catering*

  
**Tast Out**  
EVENTS & CATERING



1. Son Togores
2. Biniagual
3. Son Sampol
4. Biniorella
5. Castillo Bendinat
6. Son Berga
7. Morneta
8. Sa Font Seca
9. Castillo San Carles
10. CCA Andratx

11. Es Baluard
12. Palau March
13. Port Calanova
14. Castillo Bellver
15. Cuevas Galdent
16. Pueblo Español
17. Son Doblons

18. La Fortaleza
19. Almond Valley
20. Can Axartell
21. Motorworld
22. Amok
23. Son Burguet



# SON TOGORES



Only 10 km from Palma and Valldemossa, at the foot of the Sierra de Tramuntana, is this Mallorcan manor house surrounded by almond and olive trees. Offering many possibilities to celebrate all kinds of events.

## SPACE CAPACITIES

|          | BANQUET | IMPERIAL | COCKTAIL | THEATER |
|----------|---------|----------|----------|---------|
| INTERIOR | 100     | 60       | 100      | 50      |
| EXTERIOR | 100     | 100      | 100      | 100     |

**Location:** Road to Valldemossa

**Venue Contact:** Joana Cañellas  
+34 670 363 247 | joanacn@me.com

## INCLUDED SERVICES

- Cleaning of toilets during the event
- Access for buses up to 40 seats. Parking available
- Toilets available for people with reduced mobility

 **AUDIOVISUAL GALLERY**





# BINIAGUAL



Finca Biniagual is located in the charming village of Binissalem, just 30 minutes from Palma de Mallorca, a place that offers a wide range of possibilities. This idyllic setting is home to a splendid Mallorcan architectural ensemble, where several rooms retain their original 19th century essence.

## SPACE CAPACITIES

|          | BANQUET | IMPERIAL | COCKTAIL | THEATER |
|----------|---------|----------|----------|---------|
| INTERIOR | 120     | 80       | 200      | 150     |
| EXTERIOR | 500     | 500      | 500      | N/A     |

**Location:** Biniagual

**Contact Venue:** Vicente

+34 628 916 625

[dir.comercial@finca-biniagual.com](mailto:dir.comercial@finca-biniagual.com)

## INCLUDED SERVICES

- Access for buses up to 55 seats. Parking available
- Toilets with easy access

 **AUDIOVISUAL GALLERY**





# SON SAMPOL



Finca Son Sampol is an 18th century rustic possession located in Llucmajor, just 15 minutes from Palma de Mallorca. In 2017, the venue was renovated with the aim of offering a variety of spaces and event rooms to suit any type of celebration.

## SPACE CAPACITIES

|          | BANQUET | IMPERIAL | COCKTAIL | THEATER |
|----------|---------|----------|----------|---------|
| INTERIOR | 80      | N/A      | 160      | 80      |
| EXTERIOR | 450     | 300      | 600      | 400     |

**Location:** Llucmajor

**Contact Venue:** Xisca Sampol  
+34 619 943 768 | [xisca@sonsampol.com](mailto:xisca@sonsampol.com)

## INCLUDED SERVICES

- Access for buses up to 55 seats. Parking available
- Toilets with easy access

## AUDIOVISUAL GALLERY



# BINIORELLA



In the heart of Camp de Mar (Andratx), just 25 minutes from Palma, Finca Biniorella offers an idyllic setting with its Mediterranean essence, white interiors bathed in light, enchanting light blue windows and green gardens perfect for spectacular events.

## SPACE CAPACITIES

|          | BANQUET | IMPERIAL | COCKTAIL | THEATER |
|----------|---------|----------|----------|---------|
| INTERIOR | 100     | 80       | 150      | 100     |
| EXTERIOR | 300     | 200      | 400      | N/A     |

**Location:** Andratx

**Contact Venue:** Pedro | +34 695 508 003

## INCLUDED SERVICES

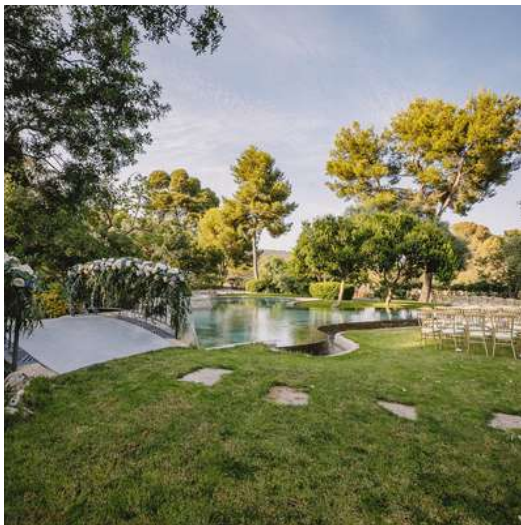
- Access for buses up to 20 seats. Parking available
- Toilets with easy access

## AUDIOVISUAL GALLERY





# CASTILLO BENDINAT



Bendinat Castle, a 19th century medieval jewel located in Calvià, Mallorca, offers a spectacular and exclusive setting near Palma, perfect for unforgettable events.

## SPACE CAPACITIES

|          | BANQUET | IMPERIAL | COCKTAIL | THEATER |
|----------|---------|----------|----------|---------|
| INTERIOR | 60      | 60       | 120      | N/A     |
| EXTERIOR | 200     | 100      | 200      | N/A     |

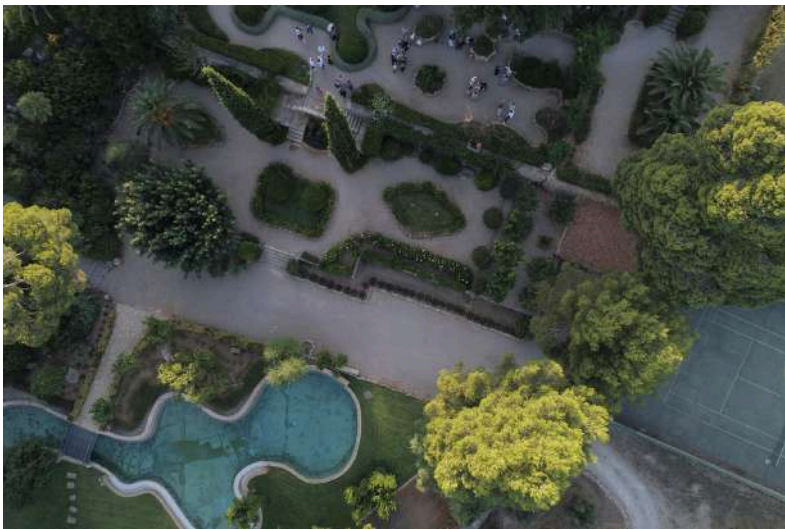
**Location:** Calvià

**Contact Venue:** Eva | +34 647 719 209  
epc@bendinatcastle.com

## INCLUDED SERVICES

- Access for buses up to 55 seats. Parking available
- Toilets with easy access

## AUDIOVISUAL GALLERY





# SON BERGA

**FOSH**  
IBIZA MALLORCA  
*catering*

  
**Tast Out**  
EVENTS & CATERING



Finca Son Berga, with its exclusive setting and breathtaking views of the Tramuntana Mountains, is the perfect setting for corporate events seeking privacy and elegance. Its large outdoor spaces allow for a versatile and personalized organization, ideal for business meetings or presentations.

## SPACE CAPACITIES

|          | BANQUET | IMPERIAL | COCKTAIL | THEATER |
|----------|---------|----------|----------|---------|
| INTERIOR | 180     | 150      | 250      | 120     |
| EXTERIOR | 220     | 150      | 280      | N/A     |

**Location:** Alaró

**Contact Venue:** Eli Rotger  
+34 619 727 981  
[sonberga.alaro@gmail.com](mailto:sonberga.alaro@gmail.com)

## INCLUDED SERVICES

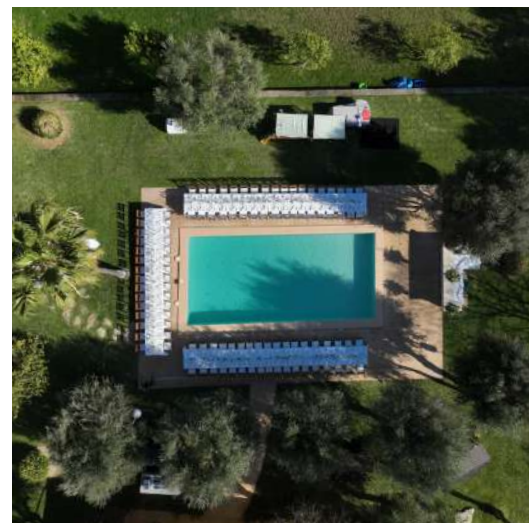
- Access for buses up to 40 seats. Parking available
- Toilets with easy access
- Air conditioning/heating
- Elevator

 **AUDIOVISUAL GALLERY**





# MORNETA



Morneta, an emblematic 13th century possession located in the heart of Mallorca, just 20 minutes from Palma, offers an ideal setting for an unforgettable experience. Its combination of centuries of history and contemporary elements gives it a unique timeless character.

## SPACE CAPACITIES

|          | BANQUET | IMPERIAL | COCKTAIL | THEATER |
|----------|---------|----------|----------|---------|
| INTERIOR | 160     | 100      | 200      | 80      |
| EXTERIOR | 250     | 150      | 300      | N/A     |

**Location:** Lloseta

**Contact Venue:** Lucia Doglio  
+34 691 541 599 | [lucia@morneta.es](mailto:lucia@morneta.es)

## INCLUDED SERVICES

- Access for buses up to 55 seats. Parking available
- Toilets with easy access

 **AUDIOVISUAL GALLERY**





# SA FONT SECA



Located 10 minutes from Palma and amidst the lush surroundings of Mallorca, this finca is a magnificent 17th century hacienda. Over the years, this stunning venue has earned a well-deserved reputation as the perfect setting for all kinds of celebrations and meetings.

## SPACE CAPACITIES

|          | BANQUET | IMPERIAL | COCKTAIL | THEATER |
|----------|---------|----------|----------|---------|
| INTERIOR | 300     | 200      | 500      | 300     |
| EXTERIOR | 200     | 100      | 1000     | N/A     |

**Location:** Palmanyola

**Contact Venue:** Dai : +34 682 915 827  
fontseca@thebocstay.com

## INCLUDED SERVICES

- Access for buses up to 55 seats. Parking available
- Toilets with easy access

 **AUDIOVISUAL GALLERY**





# CASTILLO SAN CARLOS

**FOSH**  
IBIZA MALLORCA  
*catering*

**Tast Out**  
EVENTS & CATERING



The San Carlos Military History Museum, located in the Bay of Palma, is a fortress that preserves its original rooms and houses exhibitions. Its exteriors overlooking the bay are perfect for outdoor events, such as dinners under the stars. Declared "Bien de Interés Cultural", it offers an environment full of history and charm.

## SPACE CAPACITIES

|          | BANQUET | IMPERIAL | COCKTAIL | THEATER |
|----------|---------|----------|----------|---------|
| INTERIOR | N/A     | N/A      | N/A      | N/A     |
| EXTERIOR | 500     | 300      | 700      | N/A     |

**Location:** Palma

**Contact Venue:** Natalia | +34 971 402 145  
[museomilitarsancarlos@et.mde.es](mailto:museomilitarsancarlos@et.mde.es)

## INCLUDED SERVICES

- Access for buses up to 55 seats. Parking available
- Toilets with easy access

 **AUDIOVISUAL GALLERY**





# CCA ANDRATX



The CCA Andratx Museum, the largest contemporary art center in Mallorca, is located just 30 minutes from Palma, integrated into the natural environment of the Sierra de Tramuntana. With its minimalist and traditional architecture, the space offers a unique cultural experience. It is the perfect place to organize all kinds of special events, such as weddings, conferences and film shoots.

## SPACE CAPACITIES

|          | BANQUET | IMPERIAL | COCKTAIL | THEATER |
|----------|---------|----------|----------|---------|
| INTERIOR | 800     | 300      | 1000     | 500     |
| EXTERIOR | 600     | 300      | 800      | N/A     |

**Location:** Andratx

**Contact Venue:** [info@ccaandratx.com](mailto:info@ccaandratx.com)

+34 971 137 770

## INCLUDED SERVICES

- Access for buses up to 50 seats. Parking available
- Toilets with easy access

## AUDIOVISUAL GALLERY





# ES BALUARD



The Baluard Museu d'Art Contemporani of Palma offers unique indoor and outdoor spaces, ideal for events and celebrations. It has free Wi-Fi in all areas and the option of private guided tours. Its central location in Palma makes it perfect for any type of event.

## SPACE CAPACITIES

|          | BANQUET | IMPERIAL | COCKTAIL | THEATER |
|----------|---------|----------|----------|---------|
| INTERIOR | 200     | 150      | 300      | 250     |
| EXTERIOR | N/A     | N/A      | 300      | N/A     |

**Location:** Palma

**Contact Venue:** Aina Crespi  
+34 971 908 201  
[aina.crespi@esbaluard.org](mailto:aina.crespi@esbaluard.org)

## INCLUDED SERVICES

- Loading and unloading of people in s'Escollera, of buses.
- Toilets with easy access

## AUDIOVISUAL GALLERY



# PALAU MARCH



Located in the heart of Palma, the Palau March Museum offers a sophisticated setting for corporate events. With its impressive collection of modern sculptures, Mallorcan cartography, and the spectacular 18th century Neapolitan nativity scene, it provides a unique and elegant setting. Host your event at this iconic museum and add a touch of art and distinction to your celebration.

## SPACE CAPACITIES

|          | BANQUET | IMPERIAL | COCKTAIL | THEATER |
|----------|---------|----------|----------|---------|
| INTERIOR | N/A     | N/A      | N/A      | N/A     |
| EXTERIOR | 120     | 120      | 300      | 200     |

**Location:** Palma Centro

**Contact Venue:** Renata  
+34 626 970 266  
fundacionbmarch@gmail.com

## INCLUDED SERVICES

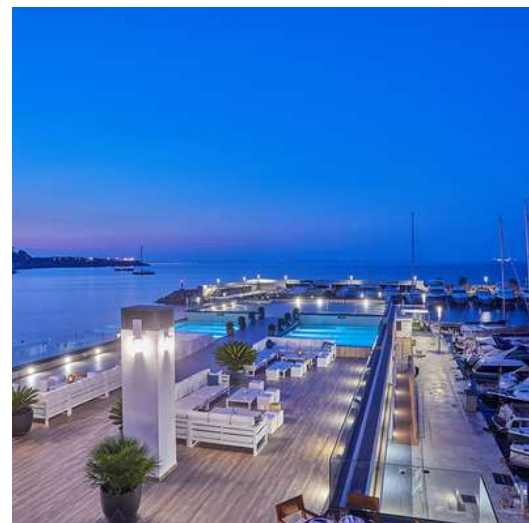
- Loading and unloading of people in s'Escollera, of buses.
- Toilets with easy access

## AUDIOVISUAL GALLERY





# PORT CALANOVA



Port Calanova, close to Palma and overlooking the bay, is the ideal location for events. It offers more than 3000 m<sup>2</sup> of versatile spaces, accommodation in the Calanova Sports Residence and nautical activities. Enjoy coffee breaks and gala dinners overlooking the Mediterranean in this perfect port for any occasion.

## SPACE CAPACITIES

|          | BANQUET | IMPERIAL | COCKTAIL | THEATER |
|----------|---------|----------|----------|---------|
| INTERIOR | N/A     | N/A      | 100      | 80      |
| EXTERIOR | N/A     | N/A      | 120      | N/A     |

**Location:** Illetas

**Contact Venue:** Nini  
+34 663 773 648  
[comercial@portcalanova.com](mailto:comercial@portcalanova.com)

## INCLUDED SERVICES

- Access for buses up to 55 seats. Parking available
- Toilets with easy access

 **AUDIOVISUAL GALLERY**



# CASTILLO BELLVER



Just minutes from Palma and surrounded by the enchanting landscapes of Mallorca, Bellver Castle is an impressive 14th century Gothic fortification. Built by King James II of Mallorca, this majestic castle has become an iconic setting that captures the historical essence of the region and offers an ideal setting for events and explorations.

## SPACE CAPACITIES

|          | BANQUET | IMPERIAL | COCKTAIL | THEATER |
|----------|---------|----------|----------|---------|
| INTERIOR | N/A     | N/A      | N/A      | N/A     |
| EXTERIOR | 200     | 200      | 300      | 160     |

**Location:** Palma Centro

**Contact Venue:** Xisca

+34 971 735 065

[castelldebellver@palma.es](mailto:castelldebellver@palma.es)

## INCLUDED SERVICES

- Access for buses up to 55 seats. Parking available
- Toilets with easy access

 AUDIOVISUAL GALLERY





# CUEVAS GALDENT



Located on the Galdent mountain, these historic 14th century quarries offer a unique and natural setting for celebrations. Its high ceilings and stone walls create a unique atmosphere, ideal for special events. At Galdent, you can enjoy an impressive space in full connection with nature.

## SPACE CAPACITIES

|          | BANQUET | IMPERIAL | COCKTAIL | THEATER |
|----------|---------|----------|----------|---------|
| INTERIOR | 400     | 120      | 250      | 300     |
| EXTERIOR | 400     | N/A      | 600      | N/A     |

**Location:** Palma Centro

**Contact Venue:** Xisca

+34 630 425 945

[info@restaurantegaldent.com](mailto:info@restaurantegaldent.com)

## INCLUDED SERVICES

- Access for buses up to 55 seats. Parking available
- Toilets with easy access

 **AUDIOVISUAL GALLERY**





# PUEBLO ESPAÑOL



Located in the heart of Palma de Mallorca, the Pueblo Español is an open-air museum that combines history and charm, making it an ideal venue for all kinds of events. Its versatility and beauty make it perfect for celebrations, corporate meetings and exclusive presentations. With its blend of unique architecture and ample spaces, it offers an unparalleled setting for professional and social events.

## SPACE CAPACITIES

|          | BANQUET | IMPERIAL | COCKTAIL | THEATER |
|----------|---------|----------|----------|---------|
| INTERIOR | 1000    | 300      | 1500     | 500     |
| EXTERIOR | 1000    | N/A      | 1500     | N/A     |

**Location:** Palma Centro

**Contact Venue:** Tatiana

+34 610 092 923

[info@puebloespanolmallorca.com](mailto:info@puebloespanolmallorca.com)

## INCLUDED SERVICES

- Access for buses up to 55 seats
- Toilets with easy access

 **AUDIOVISUAL GALLERY**





# SON DOBLONS



Son Doblons could be defined as a harmonious union of architecture, art and nature. An exclusive Villa located in the heart of the island of Mallorca in a unique natural environment. A place designed with sustainability and wellbeing in mind, ideal for a romantic and natural wedding.

## SPACE CAPACITIES

|          | BANQUET | IMPERIAL | COCKTAIL | THEATER |
|----------|---------|----------|----------|---------|
| INTERIOR | 200     | N/A      | 350      | N/A     |
| EXTERIOR | 350     | N/A      | 450      | N/A     |

**Location:** Santa Margalida

**Contact Venue:** Ray | +34 606 743 163  
info@sondoblons.com

## INCLUDED SERVICES

- Access for buses up to 55 seats. Parking available
- Toilets with easy access

 **AUDIOVISUAL GALLERY**



# LA FORTALEZA



La Fortaleza is an exclusive and remote villa, ideal for luxury events. This ancient fortress, steeped in history and with breathtaking views, offers a mysterious atmosphere. Located in an idyllic setting, it has more than 87,000 square metres, perfect for MICE events. Originally built as a defence against pirates, in the 20th century it became a residence for artists.

## SPACE CAPACITIES

|          | BANQUET | IMPERIAL | COCKTAIL | THEATER |
|----------|---------|----------|----------|---------|
| INTERIOR | N/A     | N/A      | N/A      | N/A     |
| EXTERIOR | 200     | 200      | 300      | N/A     |

**Location:** Alcudia

**Contact Venue:** [torslowry@me.com](mailto:torslowry@me.com)

## INCLUDED SERVICES

- Access for buses up to 40 seats. Parking available
- Toilets with easy access
- Tent required for plan b

 **AUDIOVISUAL GALLERY**





# ALMOND VALLEY



Located in the heart of the breathtaking Serra de Tramuntana, Almond Valley is the ideal place to disconnect from the world and celebrate any kind of special event. With exclusive use of its 200 hectare estate, protected by a double fence, every celebration at Almond Valley is transformed into a masterpiece of natural elegance in an exclusive setting.

## SPACE CAPACITIES

|          | BANQUET | IMPERIAL | COCKTAIL | THEATER |
|----------|---------|----------|----------|---------|
| INTERIOR | N/A     | N/A      | N/A      | N/A     |
| EXTERIOR | 200     | 200      | 300      | N/A     |

**Location:** Pollença

**Contact Venue:** Marc | +34 917 533 596  
events@almondvalleymallorca.com

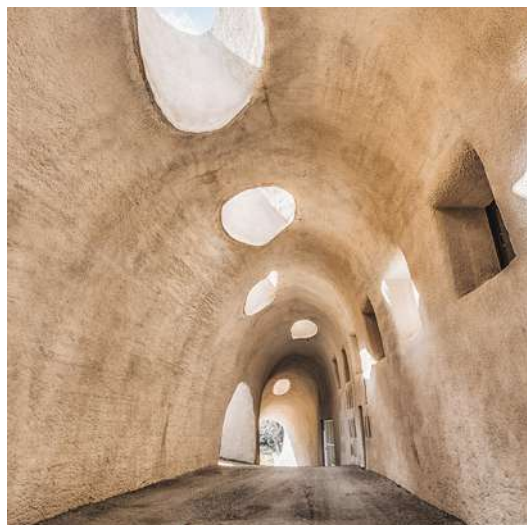
## INCLUDED SERVICES

- Access for buses up to 40 seats.Parking available
- Toilets with easy access
- Tent required for plan b

## AUDIOVISUAL GALLERY



# CAN AXARTELL



Can Axartell is a unique blend of traditional and modern Mallorcan viticulture. Can Axartell is an estate where vineyards, olive groves, forests, mountains and watercourses form one big whole, located in the northeast of Mallorca. It is one of the most modern wineries on the island and at the same time has a centuries-old history. Already in the first records of the Finca, viticulture is mentioned and its origins date back some 800 years.

## SPACE CAPACITIES

|          | BANQUET | IMPERIAL | COCKTAIL | THEATER |
|----------|---------|----------|----------|---------|
| INTERIOR | n/a     | n/a      | n/a      | n/a     |
| EXTERIOR | 150     | 100      | 200      | n/a     |

**Location:** Pollença

**Contact Venue: Fosh**  
+34 615 081 619 | [mice@fosh.es](mailto:mice@fosh.es)

## INCLUDED SERVICES

- Access for buses up to 55 seats. Parking available
- Toilets with easy access

## AUDIOVISUAL GALLERY





# MOTORWORLD

**FOSH**  
IBIZA / MALLORCA  
*catering*

**Tast Out**  
EVENTS & CATERING



At the former Coca-Cola bottling plant with its 80,000m<sup>2</sup>, located directly on the MA 19 motorway between the airport and Palma, visitors can look forward to a destination that not only makes the hearts of car enthusiasts beat faster, but also attracts those looking for a unique venue for their events.

## SPACE CAPACITIES

|          | BANQUET | IMPERIAL | COCKTAIL | THEATER |
|----------|---------|----------|----------|---------|
| INTERIOR | 600     | N/A      | 2000     | 996     |
| EXTERIOR | N/A     | N/A      | N/A      | N/A     |

**Location:** Palma

**Contact Venue:**  
events-mallorca@motorworld.de  
+34 677 344 508

## SERVICES INCLUDED

- Access for buses up to 55 seats. Parking available
- Toilets with easy access

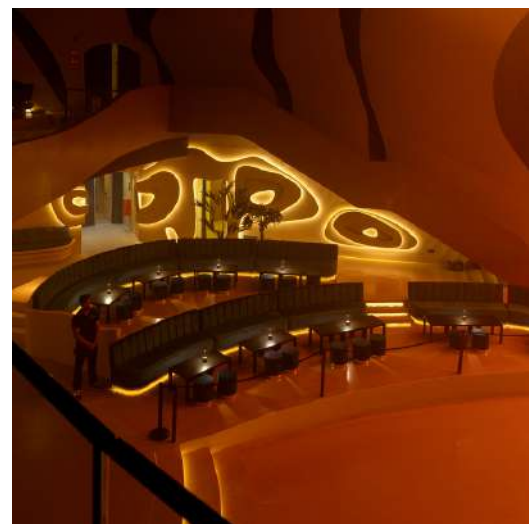
## AUDIOVISUAL GALLERY



# AMOK

**FOSH**  
IBIZA MALLORCA  
*catering*

  
**Tast Out**  
EVENTS & CATERING



At AMOK, we transform every event into an unforgettable experience, where sophistication, authenticity and the mystery of the Mediterranean combine to offer a unique setting. Whether it's a conference, incentive or private meeting, we immerse you in a space where the island's energy flows, connecting your guests with the best of Mallorca.

## SPACE CAPACITIES

|          | BANQUET | IMPERIAL | COCKTAIL | THEATRE |
|----------|---------|----------|----------|---------|
| INTERIOR | 1.200   | 1.000    | 2.000    | 1.500   |
| EXTERIOR | 3.000   | N/A      | 3.500    | N/a     |

**Location:** S'Aranjassa road

**Contact Venue: Fosh**  
+34 615 081 619 | [mice@fosh.es](mailto:mice@fosh.es)

## SERVICES INCLUDED

- Cleaning of the toilets during the event
- Access for buses up to 55 seats. Parking available
- Toilets for people with reduced mobility available.

 **AUDIOVISUAL GALLERY**





# SON BURGUET



Discover the magic of this former 17th century possession in the stunning Tramuntana Mountains of Mallorca, a UNESCO World Heritage Site. This venue offers unique spaces and spectacular surroundings for your event.

## SPACE CAPACITIES

|          | BANQUET | IMPERIAL | COCKTAIL | THEATER |
|----------|---------|----------|----------|---------|
| INTERIOR | 110     | 50       | 150      | 50      |
| EXTERIOR | 150     | 80       | 200      | N/A     |

**Location:** Puigpunyent

**Contact Fosh | Tast-Out:**

mice@fosh.es | mice@tast-out.com

+34 611 793 107

## INCLUDED SERVICES

- Illumination of the garden and castra
- Access for buses up to 30 seats. Parking available for 50 cars
- Toilets cleaned for the duration of the event. Toilets for people with reduced mobility

 **AUDIOVISUAL GALLERY**



# THANK YOU!

**FOSH**  
*catering*

  
**Tast Out**  
EVENTS & CATERING

[mice@fosh.es](mailto:mice@fosh.es)

|

[mice@tast-out.com](mailto:mice@tast-out.com)